

Issue No. 42
December 1978



RATES
1 Year \$9.00
O/Seas Airmail \$15.00
Back Issues .75 each

NEWSLETTER

HAPPY HOLIDAYS!!

The holiday season is back with us again. Seems as though I just dried out from last winter. Believe it or not, there are still fly-ins thru the winter months for us die-hards to enjoy. On Dec. 1, 2, & 3 there is a fly-in at Mexicali on the California-Mexico border. I understand they have a great airshow. Then there is the 5th annual Sun-N-Fun fly-in at Lakeland, FL on Jan 21 thru 27. Ken Rand will be there with his KR-2 again this year.

This issue of the Newsletter contains all pertinent drawings concerning construction of the flap system as used by Ken Rand on the KR-1 and -2. I don't usually devote an entire issue to one subject but feel this is an exceptional case due to the amount of interest generated by the flap system. The drawings are by Lisle Knight, 36 Margaret Ave., San Francisco, CA 94112; one of our talented KR club members.

The KR logo belt buckles and patches will be available by the time you receive this Newsletter. Sorry there isn't space for a picture...maybe in the next issue. Price of the belt buckle (antique brass finish) is \$5.50 (overseas add \$1.00 and Calif. residents add 6% sales tax). The patches are blue and white and will sell for \$1.50 or three for \$3.50.....Ernest Koppe.

BUY SELL TRADE

"SUPERCASE" adapts your VW engine to aircraft use. Starter, alternator and magneto are bolt on items. Send S.A.S.E. to Dan Diehl, 4132 E. 72nd St., Tulsa, OK 74136.

RETRACTABLE TRICYCLE GEAR!! See photos in Newsletter #35. Plans that utilize Rand's parts are now available....\$20.00...Bill DeFreze, 7530 Ironwood Dr., Dublin, CA 94566 or phone 415-828-2111.

KR-1 Fiberglass components...cowling, fuel tank, turtle deck, instrument panel. For information write to Danny McCormick, 16902 Happy Hollow, San Antonio, TX 78232.

KR builder attending Sun-N-Fun desires first ride in KR. Also, ride wanted to Sun-N-Fun from Washington, D.C. Tom Hoopengardner, 1658 Primrose Rd. NW, Washington D.C. or phone 202-291-2135.

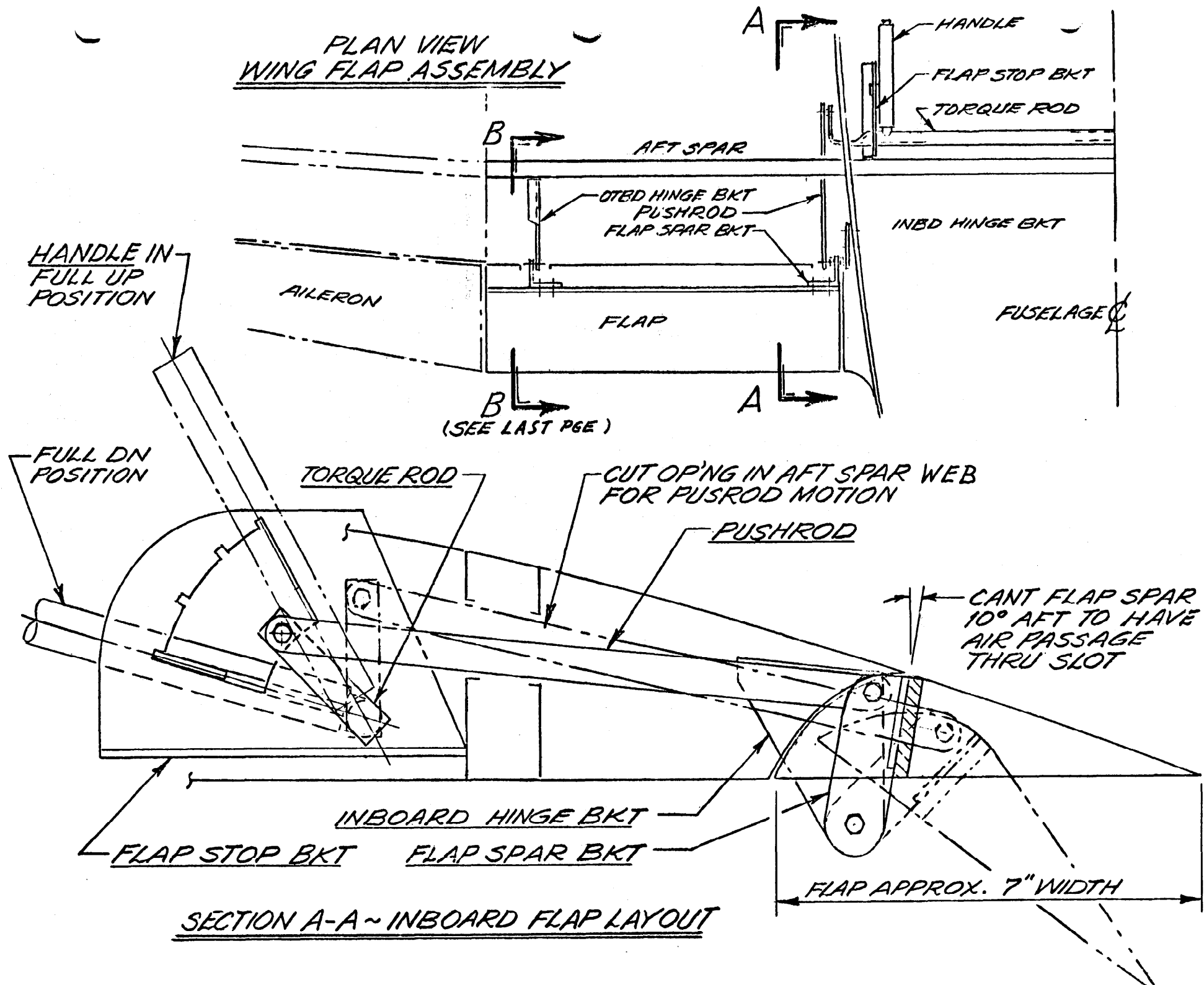
Australian KR Builders...you can buy all your fiberglass KR-1 & -2 parts from an Australian supplier. These parts are built under license to R/R and will save you the cost and delay of overseas shipping. Raylin Pty., Ltd., P.O. Box 37, Mermaid Beach 4218, QLD, Australia. Gold Coast 075-38-4848.

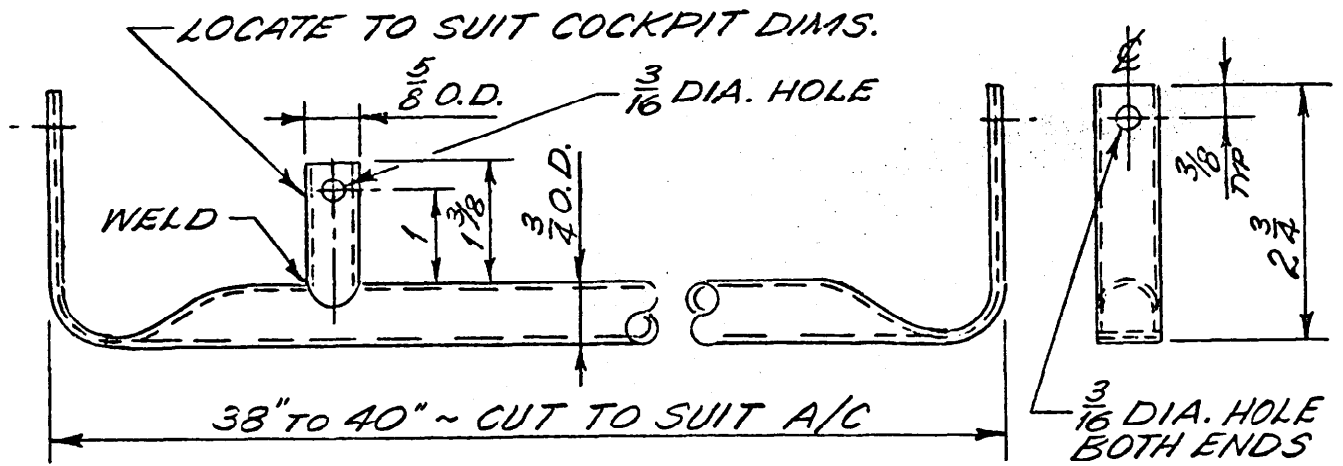
Barker 80 PH VW conversion. Never used, complete w/starter alternator, and 2½" prop extension...Steven Wiese, Ulita Manufacturing Inc, P.O. Box 412, Sheboygan, WI 53081 or phone 414-458-2842.

KR-2 for sale...(see Newsletter #40) TT 65 mins. air and approx. 10 hrs ground and taxi tests...\$5000.00. Ernest Hills, 1942 Split Rock Dr., Lancaster, PA 17601.

MINATURE METRICS
MACHINE SCREWS, BOLTS, NUTS,
WASHERS, STEEL, STAINLESS
STEEL. ENGINE STUD BOLTS
MADE TO ORDER. DIAMETERS
FROM 2mm to 14mm. WRITE TO
US WITH YOUR NEEDS AND
SPECIFICATIONS.....
MINATURE METRICS
7801 14th STREET
WESTMINSTER, CA.
92683

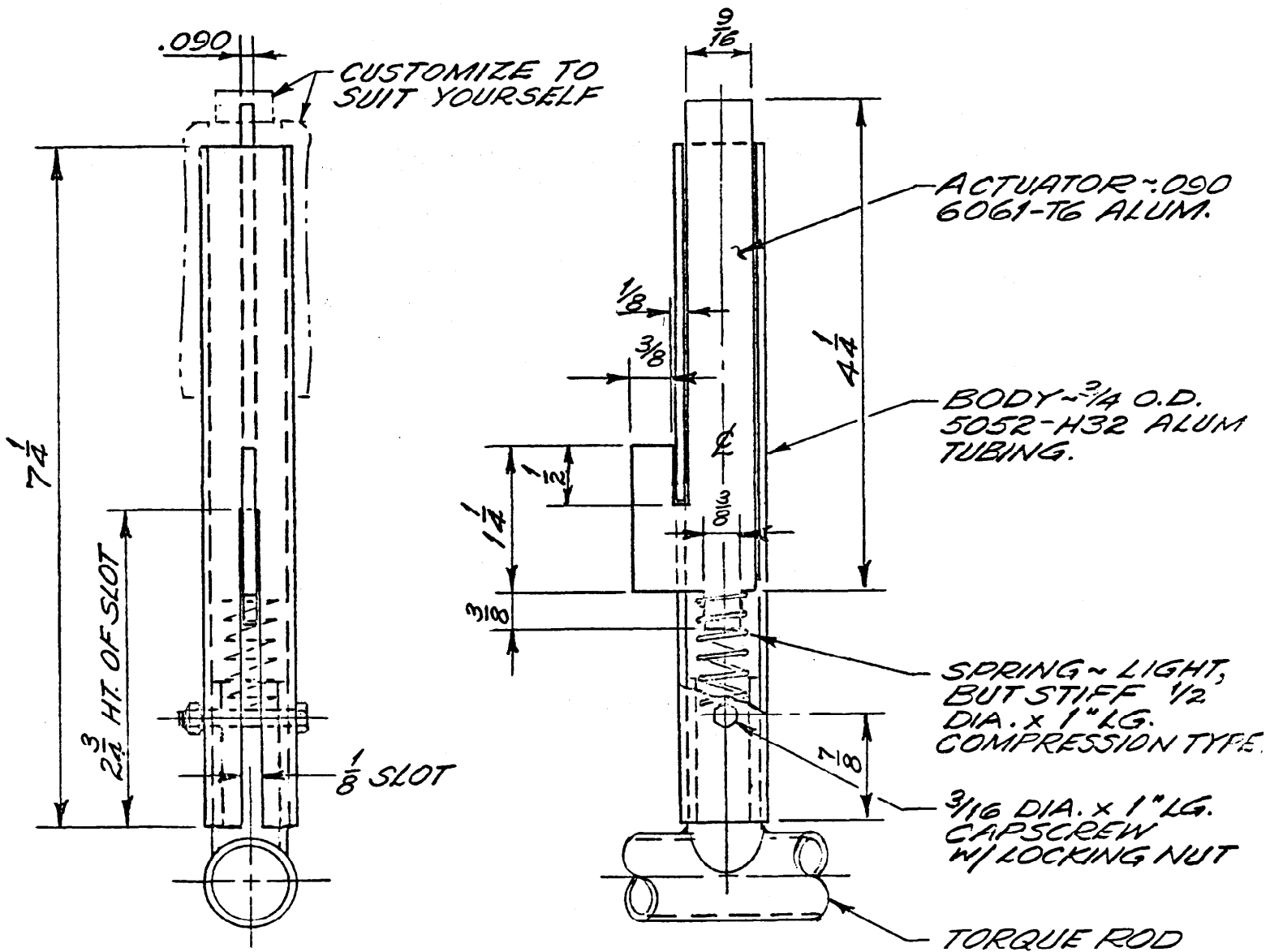
PLAN VIEW
WING FLAP ASSEMBLY



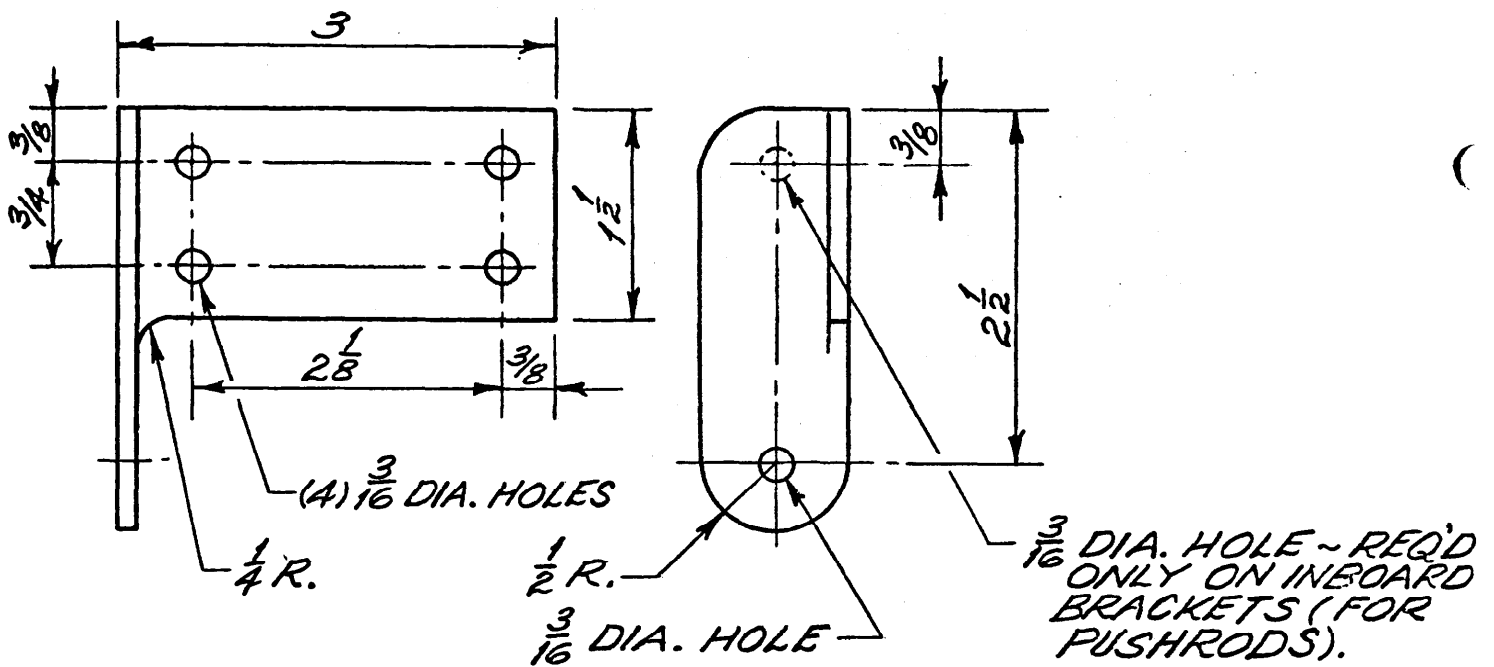


TORQUE ROD

MAT'L: 5052-H32 ALUM. TUBING

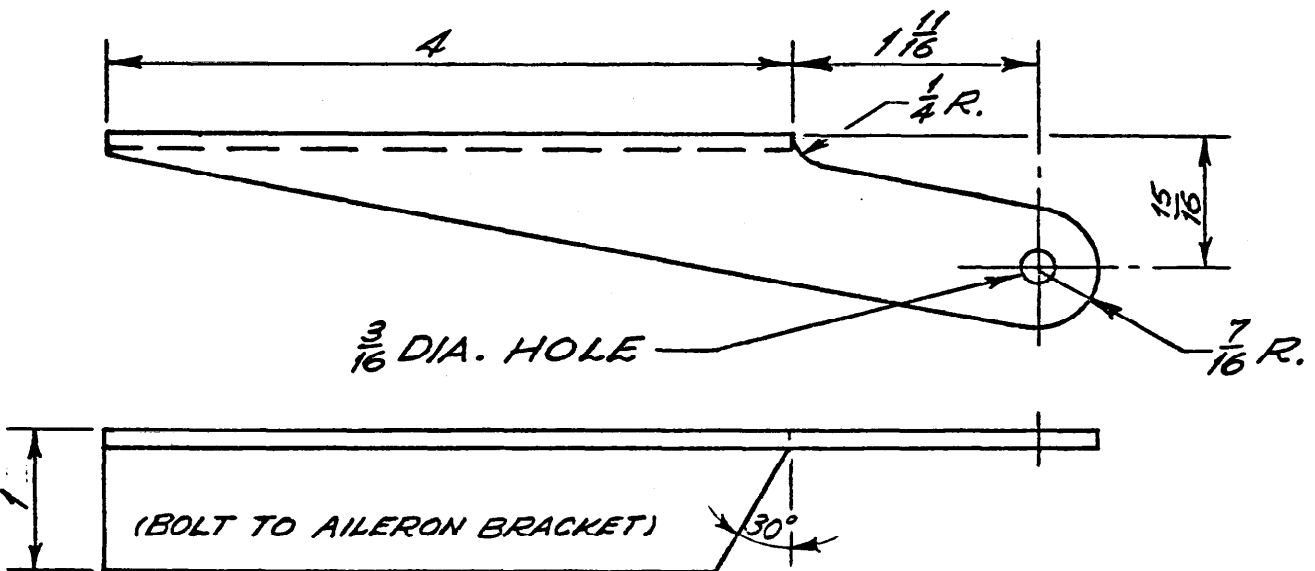


FLAP HANDLE ASSY



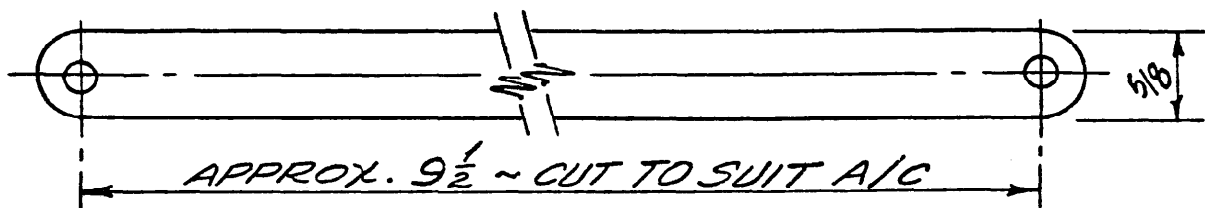
FLAP SPAR BRACKET

MAT'L: .125 6061-T6 ALUM. (2) REQ'D ~ AS SHOWN
 (2) REQ'D ~ OPP. HAND



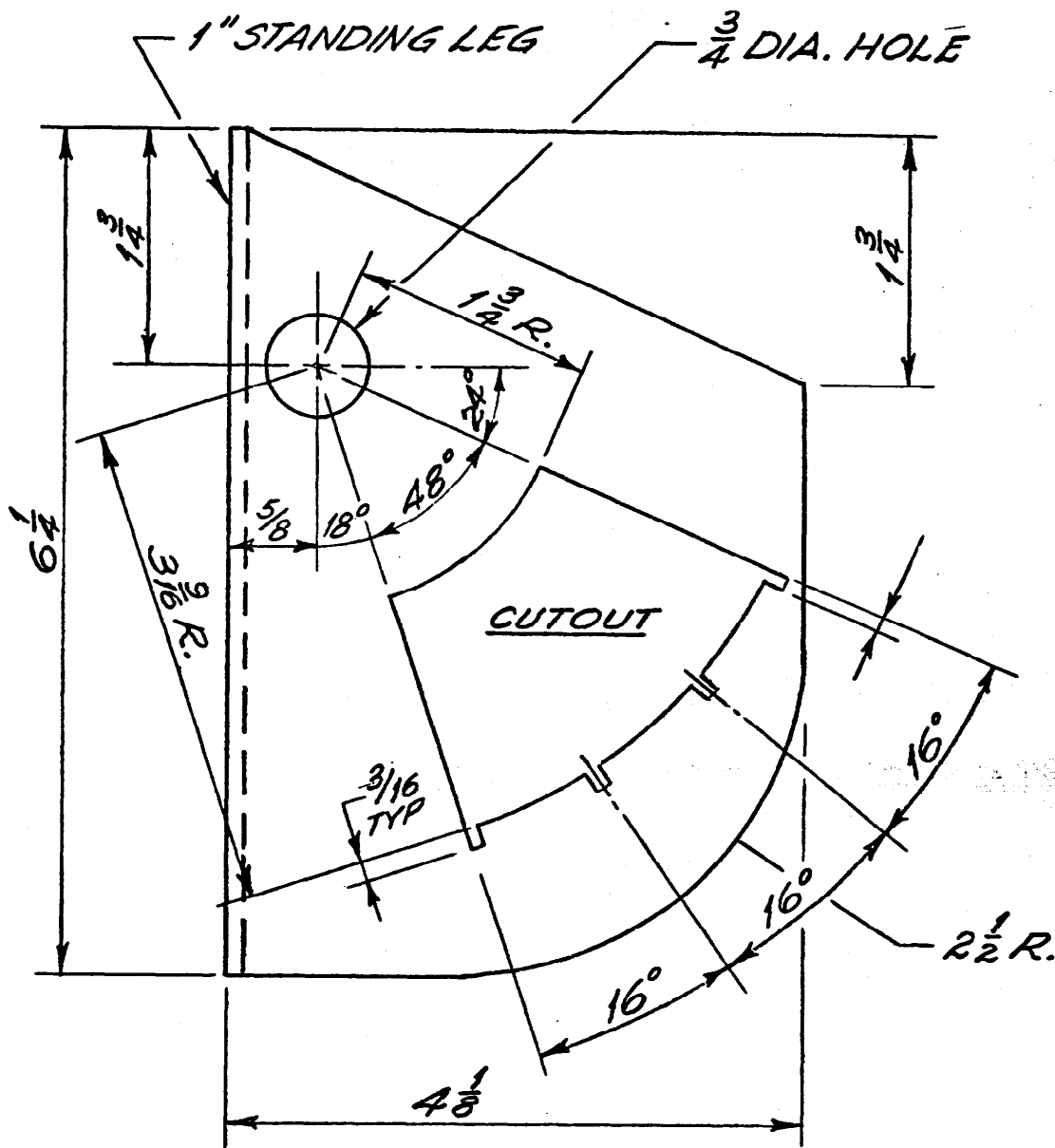
OUTBOARD HINGE BRACKET

MAT'L: .125 6061-T6 ALUM. (1) REQ'D ~ AS SHOWN
 (1) REQ'D ~ OPP. HAND



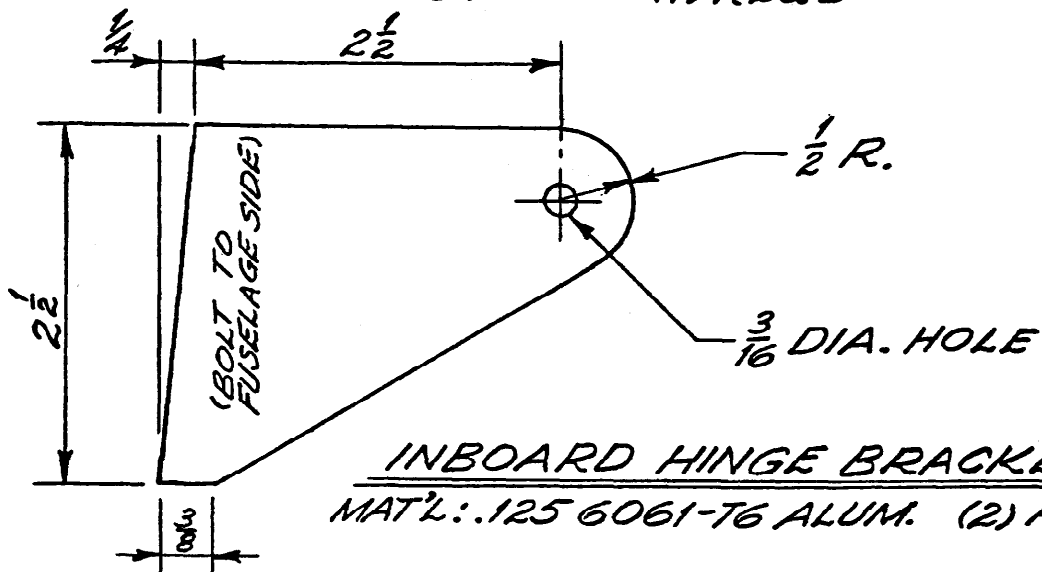
PUSHROD

MAT'L: .090 6061-T6 ALUM. (2) REQ'D



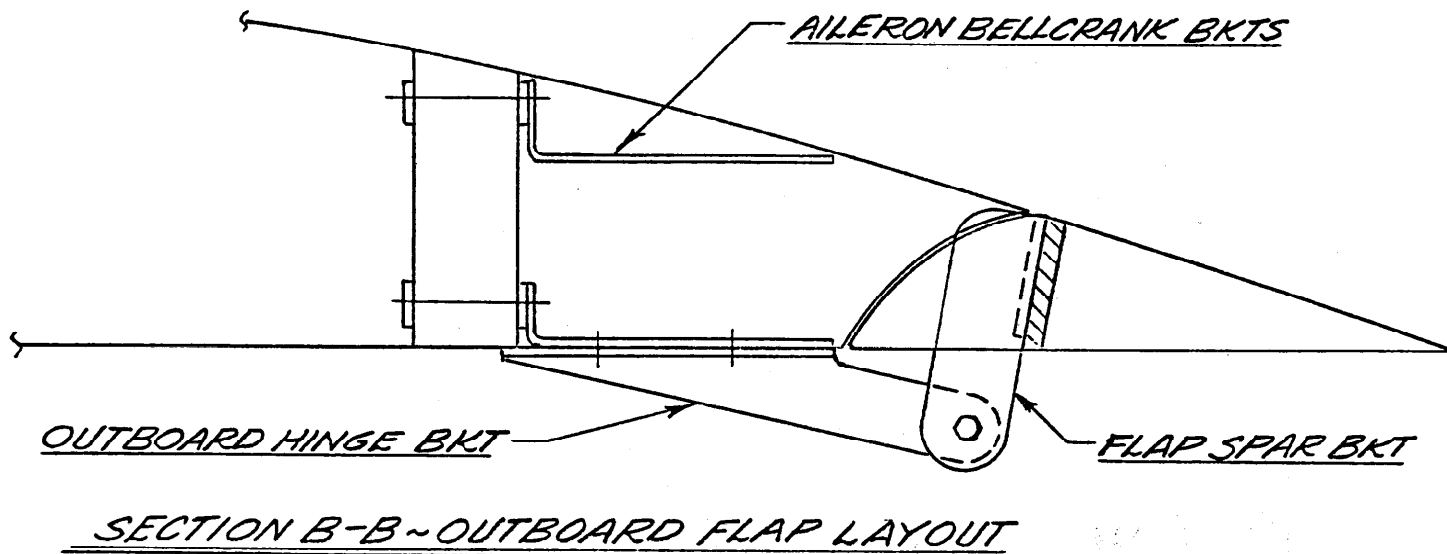
FLAP STOP BRACKET

MAT'L: .125 6061-T6 ALUM. (1) REQ'D



NOTES: 1. WHEN BOLTING THRU WOOD USE BACK-UP PLATES (.063 6061-T6 ALUM.), TYP ALL PARTS.

Fabrication of this flap system follows the same technique used in construction of the ailerons as detailed in your plans book and is easily retro-fit to your KR-1 or KR-2. The flaps give a KR greater short field capability thru ending the tendency these light aircraft have to float before touchdown. Put them on your KR, you'll be glad you did!!



ERNEST KOPPE
6141 CHOCTAW DRIVE
WESTMINSTER, CA 92683
ISSUE #42